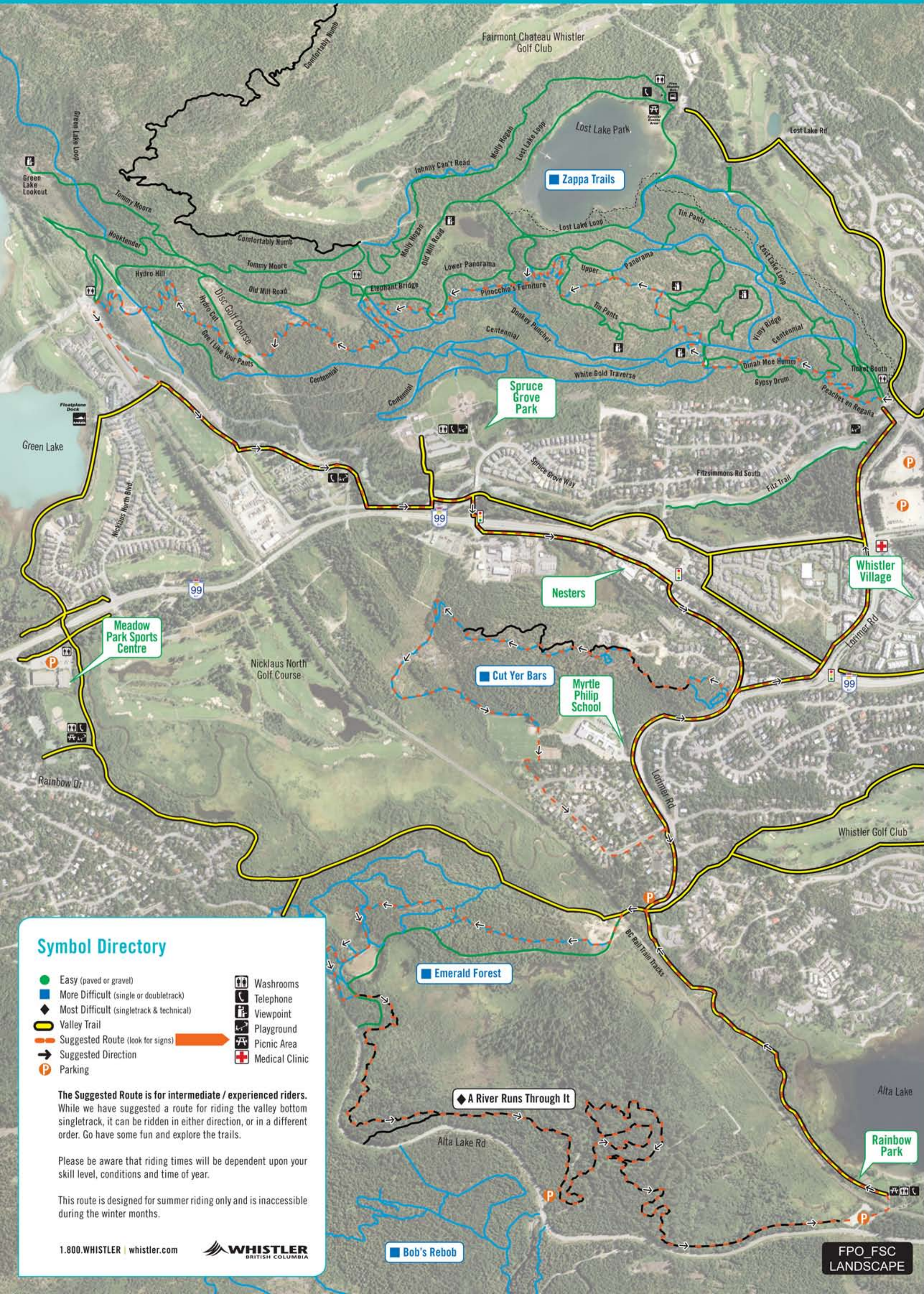


WHISTLER VALLEY SINGLETRACK

Zappa, Cut Yer Bars, Emerald Forest, River Runs Through It, and other multi-use singletrack trails.



Symbol Directory

- Easy (paved or gravel)
- More Difficult (single or doubletrack)
- ◆ Most Difficult (singletrack & technical)
- Valley Trail
- Suggested Route (look for signs)
- Suggested Direction
- P Parking
- Washrooms
- Telephone
- Viewpoint
- Playground
- Picnic Area
- Medical Clinic

The Suggested Route is for intermediate / experienced riders. While we have suggested a route for riding the valley bottom singletrack, it can be ridden in either direction, or in a different order. Go have some fun and explore the trails.

Please be aware that riding times will be dependent upon your skill level, conditions and time of year.

This route is designed for summer riding only and is inaccessible during the winter months.

WHISTLER HIKING AND BIKING MAP

Park Amenities

PARK	TRAIL	BIKING	PHONE	TOILETS	RESTROOMS	NATURAL	WATER	VIEWPOINTS	TRAILS	VEGETATION	MARKERS	CONCEPTS	DOG BEACH	MOCK	OTHER
Alpha Lake Park															
Alta Lake Park															
Big Timber Park															
Banana Park															
Blueberry Park															
Bottomless Lake Park															
Brig Park															
Dream River Park															
Emerald Boat Launch															
Emerald Forest Conservation Area															
Emerald Park															
Eva Lake Park															
Fitzsimmons Fan Park															
Function Junction Park															
Golden Dreams Conservation Area															
Green Lake Park															
Lakeside Park															
Lost Lake Park															
Marmot Park															
Meadow Park															
Millar's Pond Park															
Myrtle Philip School															
Nita Lake Park															
Pine Point Park															
Rainbow Park															
Rebagliati Park															
Rocky Knoll Park															
Snowflake Park															
Spring Creek Elementary															
Spruce Grove															
Taluswood Park															
Village Park															
Wayside Park															
Whistler Interpretive Forest															
Whistler Nature Reserve															
Whistler Secondary School															
White Gold Park															

Symbol Directory

Whistler is a 911 Community

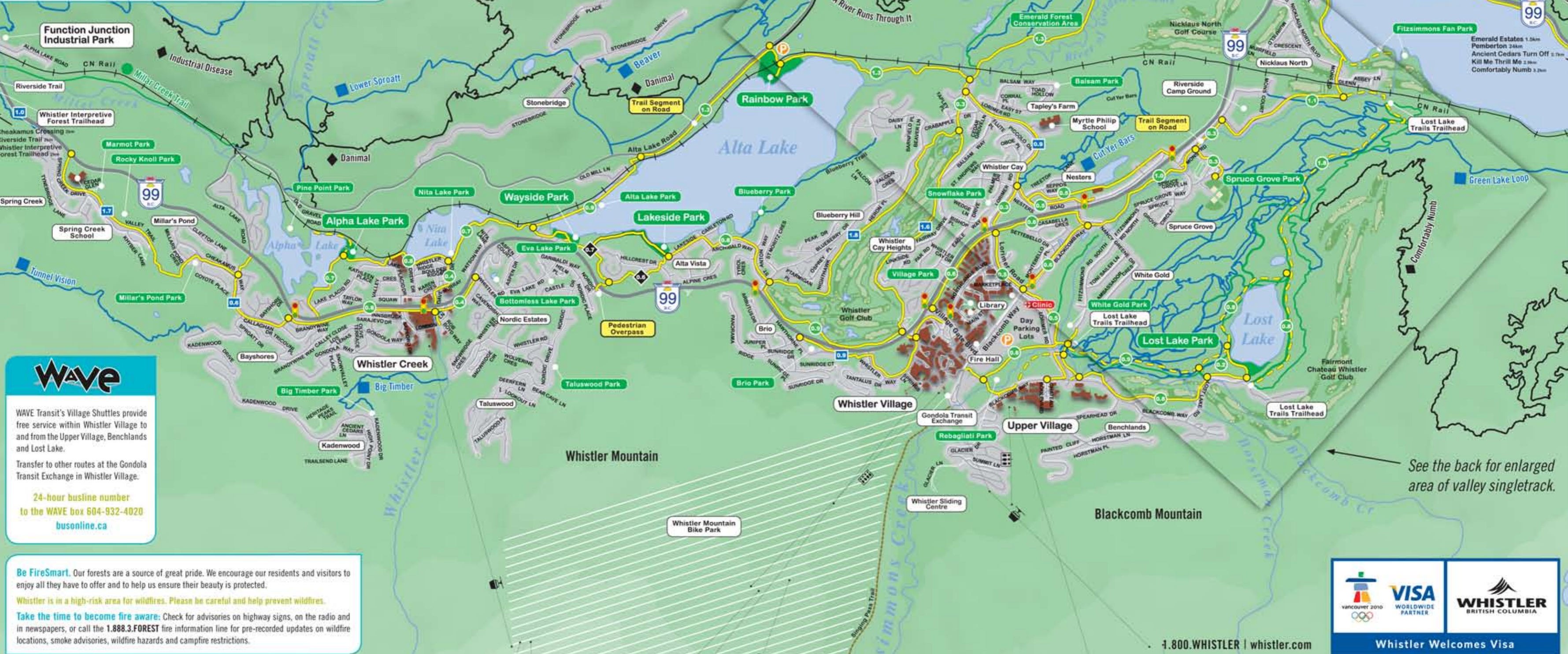
- Valley Trail (Paved)
- Valley Trail (Not Paved)
- Distance Marker
- Distances Marked in Symbol as Kilometres
- Hiking Only Trail
- Highway
- Paved Road
- Railway
- Traffic Light
- Buildings
- Rivers and Creeks

Degree of Difficulty:

- Easy
- More Difficult
- Most Difficult

Parking

*All Trails are Multi-use Unless Otherwise Noted.



WAVE

WAVE Transit's Village Shuttles provide free service within Whistler Village and to and from the Upper Village, Benchlands and Lost Lake.

Transfer to other routes at the Gondola Transit Exchange in Whistler Village.

24-hour busline number to the WAVE box 604-932-4020 busonline.ca

Be FireSmart. Our forests are a source of great pride. We encourage our residents and visitors to enjoy all they have to offer and to help us ensure their beauty is protected.

Whistler is in a high-risk area for wildfires. Please be careful and help prevent wildfires.

Take the time to become fire aware: Check for advisories on highway signs, on the radio and in newspapers, or call the 1.888.3.FOREST fire information line for pre-recorded updates on wildfire locations, smoke advisories, wildfire hazards and campfire restrictions.

Whistler Welcomes Visa

See the back for enlarged area of valley singletrack.